

Coastal Camera Club

Presents

Peek Under the Tent

2024 – 2025

August 14, 2024



Agenda

Introduction – Doug Strande, President

The Evolving Art of Photography Speaker Series – Deb Payette, Vice-President

Competition – Paul Sylvia, Competition Chair

Special Interest Groups (SIGs) – John Whitmore, SIG Chair & Webmaster

Print Studio – Paul Hammesfahr, Monitor

Virtual Beach Bash, PSA Interclub Competitions, Education Raffle

– Doug Strande for Joanne Tramposch

Odds & Ends

Q&A

Closing Remarks



The Evolving Art of Photography Speaker Series 2024-2025 Programs

Presented By

Deb Payette





Coastal Camera Club programs are supported, in part, by a grant from the ***Delaware Division of the Arts***, a state agency, in partnership with the ***National Endowment for the Arts***. The Division promotes Delaware arts events on ***DelawareScene.com***

2023-2024 Program Meeting Review

- There were 10 Program meetings from Sept 2023 through May 2024
- Averaged 53 attendees per meeting
- 45% of attendees responded to the program meeting surveys
- Average program quality rating was 4.7 on a scale of 1 to 5
- 92% of respondents learned something to improve their photography
- 88% were inspired to get out and shoot
- The February Virtual Beach Bash with Chuck Kimmerle and Bob Coates was attended by over 300 photography enthusiasts from around the world.



Meeting Logistics

- All meetings will be held via Zoom
- Zoom calls will open at 6:00 pm for members to socialize or for club business
- Presentations will begin at 6:30 pm
- All Program meetings will be listed on CCC calendar
- An invitation will be emailed one month prior to each program meeting with a registration link to obtain the zoom link for the meeting
- The email containing the zoom meeting link should be carefully saved to use at the meeting time



Meeting Logistics

continued

- A reminder will be sent out the week prior to the meeting
- All registration links will be posted on the members only page of the CCC website
- A survey will be sent to all attendees after the program for feedback
- Almost all presentations will be recorded for future viewing. Stored on Vimeo in the Members Only section of the website and password protected



Program Meeting Dates

2024-2025

- ❖ August 28 (extra)
- ❖ September 11
- ❖ October 9
- ❖ October 30 (extra)
- ❖ November 13
- ❖ December 4 *
- ❖ January 8
- ❖ January 29 (extra)
- ❖ February 11* (Tuesday)
- ❖ March 12
- ❖ April 9

* December meetings are scheduled early in the month to accommodate the Holiday Seasons. February meeting is scheduled for a Tuesday to accommodate our speaker.





August 28, 2024

David Blecman

"10 Things to Strive for in Your Images "

David will be discussing the 10 things to strive for in your images. Also, David will be reviewing members images at the end of his talk. If you would like to participate, please provide your image to Deb Payette at debpayette@gmail.com by August 21, 2024.



September 11, 2024



Rich Lewis

" Finding Your Creative Voice"
*Learn how one simple word and 4
questions can change your
photography"*

In this presentation Rich Lewis will teach you 4 simple questions whose answers will lead you to define your style. He will also teach one important key word that will drive everything you do with your photography, and possibly your life.

This presentation is full of examples of how this questioning approach leads to creative solutions based on a unique creative voice.





October 9, 2024

Lori Lankford

"Texture Photography"

Photographer Lori Lankford will share all the fine details of texture photography. She will help us explore this genre of photography, including how to find textures, capture them, and bring out the details in editing.



October 30, 2024

Kate Silvia



"The Digital Darkroom Mindset. Your Photography Taken to a Whole New Level "

Creativity begins in the field, and is only limited by your imagination...and a touch of skill of course. We're going to learn how to PLAN for post processing while we're still collecting images in the field.



November 13, 2024

Hazel Meredith



"Working with Textures & Overlays -
Turn Ho-Hum into a Work of Art "

Don't delete that digital image! Turn that "almost" good shot into a work of art by utilizing textures and overlays. There are many things you can do – Hazel will show you how!





December 4, 2024

Mike Moats

"The Four Seasons of Macro"

Mike will cover each season of the year and show the life cycles of the plants and open the macro photographers' eyes to the amazing variety of subject matter. This will inspire you to get out and shoot more



January 8, 2025

Ian Plant

"How to Take Amazing Wide-Angle Photos"

Pro photographer Ian Plant will teach you how to use your wide-angle lens to create compelling and unique landscape, wildlife, and travel photos.





January 29, 2025

Mark Battista

“Still Life Photography”

Mark Battista, a nationally recognized Fine Art Photographer and Painter, will discuss the “Art of Still Life Photography” and share his approach for creating images that tell a story, communicate an idea, and express a mood.





February 11, 2025

Franka Gabler

"Expressing Mood and Capturing the Essence"

To resonate with the viewer, a successful photograph needs to tell a story. Also, to connect with a viewer, a photograph needs to evoke emotions – by telling a little bit more about the place than just being a mere record of the place.

The presentation will analyze several essential components that contribute to expressing and conveying mood such as choice of light, color, contrast, weather, and/or shutter speed exposure.





March 12, 2025

Huibo Hou

"Personal Expressive Black and White Landscape Photography "

In the first half of this talk, Huibo will delve into the development of one's personal vision, drawing from her own evolution in B&W landscape photography. In the second half, she will explore various compositional and tonal control techniques, including her postprocessing flow, with the aim of improving one's vision of seeing and editing in black and white.



April 9, 2025

Phil Atiyeh

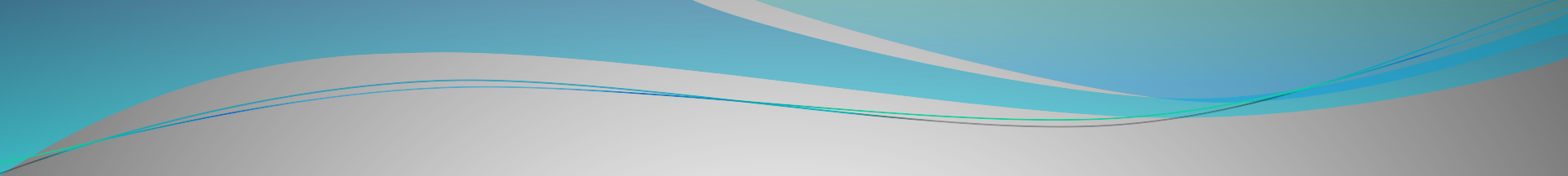
"Creating Colorful, Abstract Works of Art from a Single Photograph "

The presentation will take you step-by-step through the process where a select array of Photoshop tools are used to create a large, colorful master file – or tapestry – where images are ultimately extracted.

Member Participation Examples

- Share images from a unique travel location
- Explore the possibilities and pitfalls of a special technique you have used
- Describe and demonstrate particular photo gear
- Discuss software that you have found useful

A typical member presentation would be a 30 minute (or less) “opening act” prior to the featured speaker.



COMPETITION

Presented By

Paul Sylvia Competition Chair



Competition Schedule

Date	Schedule	Meeting
September 25 th	4 th Wednesday	Digital Zoom
October 23 th	4 th Wednesday	Digital Zoom
November 20 th	3 rd Wednesday	Digital Zoom
December 11 th	2 nd Wednesday	Digital Zoom
January 22 nd	4 th Wednesday	Digital Zoom
February 26 th	4 th Wednesday	Digital Zoom
March 23 rd	4 th Wednesday	Digital Zoom
April 23 rd	4 th Wednesday	Digital Zoom

Competition Starting Times:

6:00pm for informal social time

6:30pm Competition will begin



Competition Information

- Competition Levels are used to provide comfortable peer grouping
 - Members can request to be set in a specific level
 - Promotions occur to assure integrity of peer groups
- Competition provides more than a score and recognition
 - Scores over time provide a way to measure your growth
 - Feedback or critiques by judges provide pathways to growth
 - Socialization provides members with an introduction to other members having the same interest



Competition Update

Competition committee adopting image reviews after each competition

- A new approach to image review and feedback was tested in the March and April competitions. The response was very favorable and will be adopted for the new year.
- Images will be selected and edited based on judge comments then presented at the end of the competition providing visual feedback.
 - Members will see how slight edits can change the impact of an image.
 - Knowing an image can be perceived in many ways provided edits will be the opinion of the judges and competition committee.
 - Edits are for consideration by all members in a positive learning environment.
- Edits will be in four areas as required to provide meaningful feedback
 - Images may receive new cropping
 - Images may receive global adjustments
 - Images may receive local adjustments with masks
 - Images may receive color adjustments or toning



Assigned Digital Competition Topics 2024-2025

September - Phone only: original photo must have been taken with a cell phone. There are no restrictions on subject matter or processing techniques.

October - Wrinkled: subject matter must show distortions caused by nature/wear and tear. Examples include soil, fabric, and skin, but are not limited to those.

November - Natural abstract: photo must be of a living subject and display a pattern as it exists in its natural state. There are no hand of man or processing restrictions.

December - Nature with Hand-of-Man: the opposite of “no hand of man”, examples might be images that include roads, a fisherman, a mountain hiker, non-native species.

January - Eyes: the organ that receives light and visual images, found in humans and most animals.

February - Musician(s): those who make music: who perform, compose, conduct, arrange, and teach music, those who makes music.

March - Triangle, Triangular: Having three sides or three corners; creating the impression of a three-sided shape; a composition which places a group of three so it infers a triangular shape.

April - Mirrored Images: a reflected duplication of an object that appears almost identical but is reversed in the direction.



- Competition Categories – Six
 - Color, Monochrome, Multi-Scape, Nature, Assigned, Artistic
 - Two images per competition, one per category
 - 3mb image size limit
- Scoring range of 5, 5.5, 6, 6.5, 7, 7.5, 8, 8.5, and 9
- Scores are cumulative of a three-judge panel
 - 1st place (requires a minimum of 22 pts)
 - 2nd place (requires a minimum of 20 pts)
 - 3rd place (requires a minimum of 18 pts)



Competition Categories

- **Open Color** - The photograph is not monochromatic
- **Open Mono** – Monochromatic Limited to B&W, Sepia (colors of browns), or Cyanotype (bluish colors).
- **Assigned Pictorial** - An Assigned Pictorial image expresses the “TOPIC” of the month in Color or Monochromatic
- **Creative Artistry** - Images must represent an altered reality, meaning an image is noticeably different from a scene normally viewed through a camera lens.
- **Multi-Scapes** - Landscape photography involves capturing an image that embodies the spirit and the beauty of the outdoors. Multi-Scapes broadens the traditional definition of landscape photography to include images of the sea, sky, skylines and much more. Images can be color or monochromatic.
- **Open Nature** - Nature photography is a wide range of photography taken outdoors and devoted to displaying natural elements such as wildlife, plants, and close-ups of natural scenes and textures.

Competition Rule Changes for 2024-2025

- Image Submission (Big Change)
 - Landscape maximum width 2880 pixels
 - Portrait or Square maximum height 1920 pixels
 - Minimum Long Edge 800 Pixels
 - Image size guidance will be provided on website
- NO Duplicate image in same competition by submission in two categories.
- End of Year Competition selection of images will be based on the following criteria in each Level (1, 2, and 3) providing recognition for excellent images.
 - All images awarded 1st place (Original Rule)
 - Level 3 images 25 Points or greater (New)
 - Level 2 images 24.5 Points or greater (New)
 - Level 1 images 24 Points or greater (New)
- Images Submission Size to 2880 Wide and 1920 Tall Maximum pixels



Open Nature

Hand of Man (HoM) IS NOT ALLOWED

- Elements including humans or constructed by humans, shall not be present.
 - Houses, buildings, fences, roads, paths, maintained areas are not allowed
 - Animals constrained or in an unnatural environment such as zoos, aquariums, controlled environments, game farms, rescue leagues, cages, butterfly houses or any other situations where human intervention is required for survival are not allowed.
 - Human created hybrid plants, cultivated plants, feral animals, domestic animals, or mounted specimens are not allowed, as is any form of manipulation that alters the truth of the photographic statement.

The Nature Category is difficult.

- *The category offers a challenge making it a very rewarding category.*
- *Members MUST work hard to assure images entered are compliant to the Open Nature Rules.*
- *If an image was taken in a yard, rainfall pond, farm, indoors, professional garden or garden center please understand it has HoM **no matter the crop.***
- *The competition review committee works hard at screening for HoM prior to competition.*
- *We can't see what we can't see.*
- *The responsibility rests on the photographer to question themselves if HoM has entered the image. When unsure try Color, Mono, Multi-Scape, Assigned, or Artistic categories.*



About AI

Our general competition rule captures all elements in a competition image ORIGINAL. Any entry of text in AI Generated elements are prohibited in competition.

Our Rule States:

“The final result must begin with an original image or series of images that were captured or made by the maker either digitally or on film.”



Total Images Submitted 2023-2024

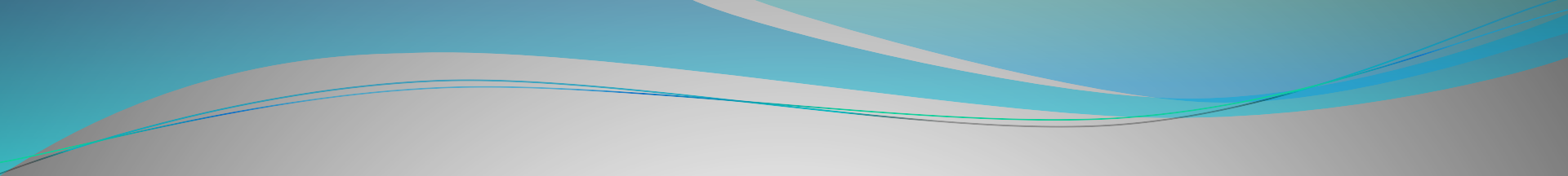
Sum of Count	Column Labels	2023-09	2023-10	2023-11	2023-12	2024-01	2024-02	2024-03	2024-04	Grand Total
Assigned Pictorial		16	31	26	14	22	26	27	16	178
Level 1		1	5	2	2	3	3	3	5	24
Level 2		7	16	12	6	11	9	11	7	79
Level 3		8	10	12	6	8	14	13	4	75
Creative Artistry		2	9	11	12	10	4	11	12	71
Level 1					1			2	2	5
Level 2		1	3	3	4	6	3	2	5	27
Level 3		1	6	8	7	4	1	7	5	39
Multi-Scape		11	21	23	14	14	17	16	9	125
Level 1			2	3	1	1	1	1	1	10
Level 2		5	8	10	5	3	8	8	6	53
Level 3		6	11	10	8	10	8	7	2	62
Open Color		23	27	33	25	31	20	18	27	204
Level 1		2	2	3		6		1	2	16
Level 2		8	11	13	13	14	9	5	11	84
Level 3		13	14	17	12	11	11	12	14	104
Open Mono		16	17	16	20	17	19	16	14	135
Level 1		1	2	1	4	2	1	3	1	15
Level 2		3	5	5	5	6	8	5	9	46
Level 3		12	10	10	11	9	10	8	4	74
Open Nature		24	17	15	19	16	25	25	23	164
Level 1		2				3	1	2	1	9
Level 2		8	9	6	8	6	10	11	10	68
Level 3		14	8	9	11	7	14	12	12	87
Grand Total		92	122	124	104	110	111	113	101	877



Total Images Awards 2023-2024

Sum of Count	Column Labels									
Row Labels		2023-09	2023-10	2023-11	2023-12	2024-01	2024-02	2024-03	2024-04	Grand Total
Assigned Pictorial		7	13	11	9	9	13	12	11	85
Level 1		1	2	2	2	2	3	3	3	18
Level 2		3	6	5	4	3	4	6	4	35
Level 3		3	5	4	3	4	6	3	4	32
Creative Artistry		2	7	10	9	5	3	7	9	52
Level 1					1			2	2	5
Level 2		1	3	3	4	2	2	2	3	20
Level 3		1	4	7	4	3	1	3	4	27
Multi-Scape		8	6	11	9	11	7	10	7	69
Level 1			1	2	1	1	1	1	1	8
Level 2		4	2	3	4	2	2	4	4	25
Level 3		4	3	6	4	8	4	5	2	36
Open Color		10	9	11	7	10	6	10	11	74
Level 1		1	1	3		3		1	1	10
Level 2		4	5	4	3	3	3	3	4	29
Level 3		5	3	4	4	4	3	6	6	35
Open Mono		9	10	12	10	7	8	14	8	78
Level 1		1	2	1	2	2	1	3	1	13
Level 2		3	3	3	4	2	3	5	4	27
Level 3		5	5	8	4	3	4	6	3	38
Open Nature		8	6	6	11	13	12	13	9	78
Level 1		1				3	1	2	1	8
Level 2		3	3	3	6	5	5	4	3	32
Level 3		4	3	3	5	5	6	7	5	38
Grand Total		44	51	61	55	55	49	66	55	436





Special Interest Group (SIG) Introduction

Presented By

John Whitmore



What are Special Interest Groups (SIGs)

- Created to meet the diverse interests of club members
- Special Interest Groups focus on a particular subject
- Size from 6 to unlimited number of members
- SIG leaders determine meeting times and places
- Contact the SIG leader to join



SIGs

- Nikon Z Camera
- Wildlife Photography
- Event Photography
- Macro & Close-Up Photography
- Photography as Fine Art
- Landscape Photography
- Southern Maryland Critique (SOMD)
- What Makes a Winning Image
- Apprentice Judge Program
- Expanded Vision
- Night Sky Photography

NIKON Z Camera



Nikon Z Camera

- Leader: John Hoyt (jhoyt.webmail@gmail.com)
- Primary focus is to provide a forum for Nikon Z camera users to learn and share information about the platform
- No limit on membership
- Members will meet once a month



Wildlife Photography



Wildlife Photography

- Leader: Sharon Denny (sdenny@me.com)
- Primary focus is helping members improve their wildlife photography skills
- Unlimited membership
- In-person outings offered at various wildlife-rich sites
- SIG Facebook page provides an opportunity to share images and get feedback



Wildlife Photography

● Outings

- We strive for monthly outings, weather and wildlife availability permitting
- Some are vehicle-friendly (Blackwater NWR, Bombay Hook NWR)
- Some require more walking (Fowler Beach, Prime Hook)
- Some require kayaks
- We do an annual outings to the Delaware Botanic Gardens and to Trap Pond

● Facebook Page:

- <https://www.facebook.com/groups/243414399185597>



Event Photography



Event Photography

- Leader: Sam Markman (szmarkman@yahoo.com)
- Primary focus is to develop a cadre of photographers who have the basic skills necessary to successfully photograph events
- Unlimited membership
- Meetings focus on developing specific skills such as lighting, posing etc.
- As a 501(c)3 itself, the Club's event photographers contribute their skill and effort to other 501(c)3 organizations, not commercial entities



Macro & Close-Up Photography



Macro & Close-Up Photography

- Leader: Rick Goldberg (rgoldberg35@gmail.com)
- Co-Leaders: Cosby Payne
- Primary focus less on field trips and more on learning (via YouTube) and sharing (via Facebook) close-up or macro images
- Members will share and provide feedback on SIG Facebook page
- Leader will share YouTube educational videos and enlist the aid of YouTubers to provide feedback on members images
- Unlimited size
- Quarterly field trips
- Facebook link is:
<https://www.facebook.com/groups/1712484425665166>



Photography as Fine Art

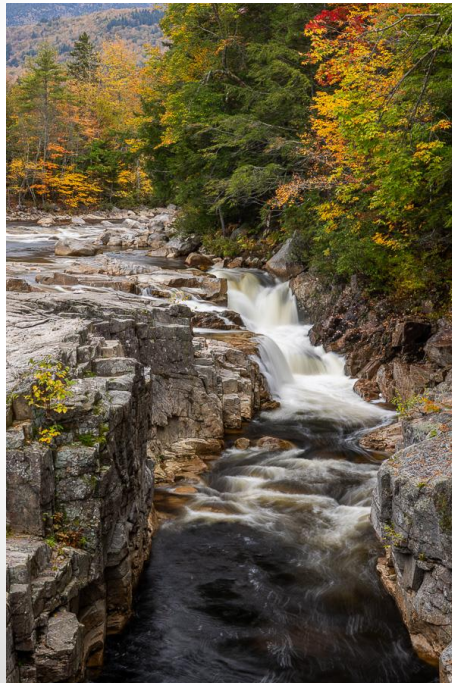
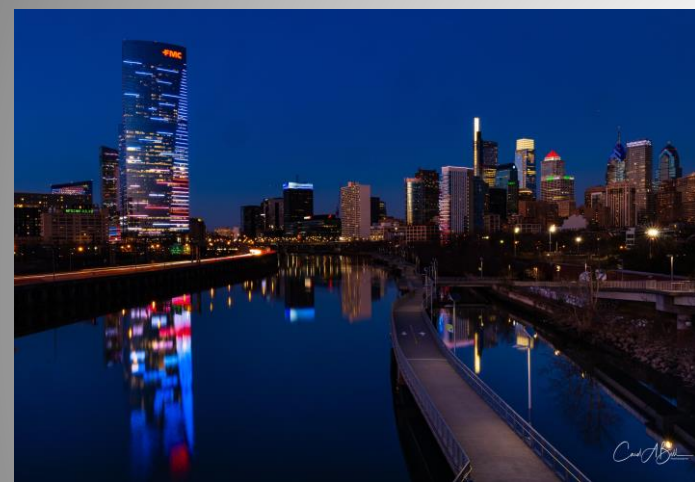


Photography as Fine Art

- Co-Leaders: Leslie Sinclair (scubalas@hotmail.com) and Stan Divorski
- Goal of membership is to enhance and refine member's personal photographic vision and style
- Our approach and activities include:
 - Member sharing and critiques
 - Visits to museums and galleries
 - Guest speakers – artists and curators
 - Discussion of fine art photographers works
- Membership is limited to 20
- Meetings are held on the 3rd Thursday of each month at 1:00 PM on ZOOM
- If interested email:
 - Stan Divorski at standivorski@gmail.com
 - Leslie Sinclair at scubalas@hotmail.com



Landscape Photography



Landscape Photography

- Leader: Bill Crnkovich (bestwestphoto@gmail.com)
- Primary focus is to develop and fine tune the skills of landscape photography
- Unlimited Membership
- Monthly field trips to local and distant places including multi-day shoots
 - Nature, sunrises/sets, night lights, cityscapes
 - In-the-field discussions and sharing of techniques
- SIG Facebook page provides an opportunity to share images and get feedback

<https://www.facebook.com/groups/3342214909440949>



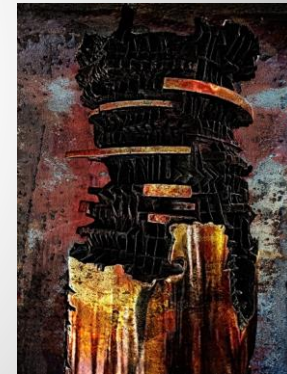
Landscape Photography

Upcoming field trips:

- September: Longwood Gardens
- October: West Virginia in autumn (several days)
- November: Trap Pond State Park
- December: Christmas lights
- January: Sunrise at the beach
- February: City lights at night (Baltimore or DC)
- March: Assateague Island



Southern Maryland Critique

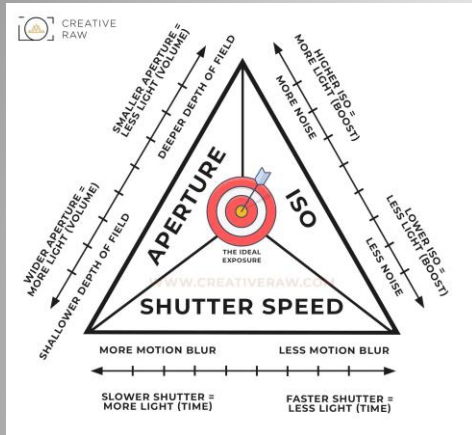


Southern Maryland Critique

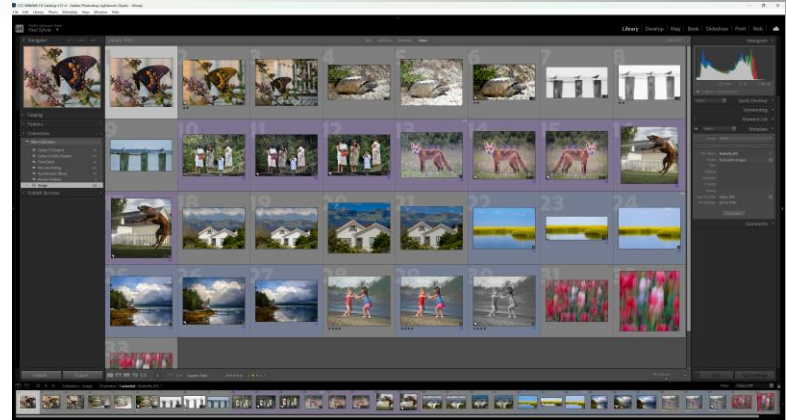
- Leader: Joanna Macaulay (calmreflectionsphotography@gmail.com) Co-Leader: Beth Fabey (nonnie@gmail.com)
- Emphasis is on photography in Southern Maryland
- The group will focus on the technical and artistic elements of taking and processing a photograph
- Members will present photos to the group for critiques
- Bi-monthly mini-competitions are held on Zoom using an outside judge to provide feedback from another perspective
- Bi-monthly presentations are held on zoom by SOMD SIG members, other camera club members or outside speakers on a variety of topics.
- The group runs the Photography competitions at the St. Mary's County Fair in September
- Impromptu, often weather-dependent, field trips are held in-person to various events or points of interest
- Members have opportunities to show their work in exhibits at various local sites
- Membership is limited to 15 people
- Meetings are on zoom the 1st and 2nd Tuesday of each month

What Makes A Winning Image

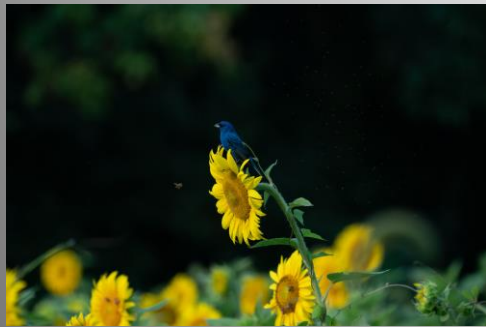
Foundational



Evaluation



Advanced Evaluation



Enlightenment



What Makes A Winning Image

- **Leaders:** Kathryn Harris, Deb Payette, Jim Cotter, and Paul Sylvia
- **Primary focus** is to help members evaluate and improve their own images
- WMAWI Groups provide opportunities to grow in post process skill and photographic vision
 - WMAWI Foundational – Camera and post-processing basics(Cotter)
 - WMAWI Evaluation – Postprocessing and image reviews (Sylvia)
 - WMAWI Advanced Evaluation – Advanced peer reviews (Payette)
 - WMAWI Enlightenment – Understanding Fine Photography (Harris)

What Makes a Winning Image (WMAWI)

- **WMAWI Foundational** – If you are new to competition or just want to improve your images, WMAWI Foundational will begin to develop your skills. The only prerequisite is having a camera or smartphone to take pictures and a desire to learn.
- **WMAWI Evaluation** – Image Improvement is the first element and is a continuation of WMAWI Fundamentals with localized edits with masks and color control to enhance image impact. Image Review is the second element implementing peer review to receive feedback on images. The leader will provide edits in Lightroom based on group feedback and discussion during both elements. Members will need an understanding of global edits in post processing applications such as Lightroom. Participation in WMAWI Foundational is highly recommended.
- **WMAWI Advanced Evaluation** - We will take what we learned in Evaluation and move visual photographic skills to the next level. Members should be able to edit their photos and be ready for competition. The only prerequisites are completing WMAWI Foundational and WMAWI Evaluation or having a good understanding of what is covered in Foundational and Evaluation.
- **WMAWI Enlightenment** - Continuation of the WMAWI program of peer review for photographers who have mastered the skills of photographic technique, composition, and post-processing who wish to improve their understanding of what makes a fine photographic image.



What Makes a Winning Image

- Membership in each group is limited to 15 people
- Meetings will be held on Zoom
- WMAWI Foundational will meet the 2nd Thursday of each month from 10am-12pm. Led by Jim Cotter
- WMAWI Evaluation will meet monthly the 1st Monday for Image Improvement from 6pm-8pm and on the 2nd Monday for Image Review from 6pm-8pm. Led by Paul Sylvia
- WMAWI Advanced Evaluation will meet the 1st Wednesday of each month from 10am-12pm. Led by Deb Payette
- WMAWI Enlightenment will meet the 2nd Friday of each month from 10am-12pm. Led by Kathryn Harris

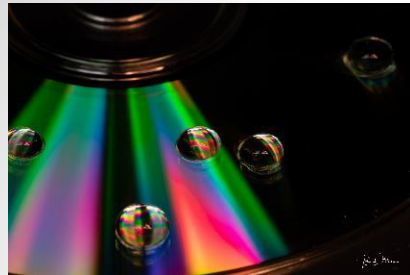


Apprentice Judge Program

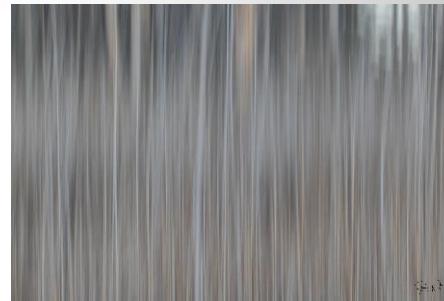
- Leader: Kathryn Harris (kathrynph@aol.com)
- Primary Focus is to train Club members in the skills of:
 - competition judging; competition scoring; and giving constructive feedback on images.
- This SIG is open to any interested Club member who wishes to learn these skills.
- Recommended that existing judges participate in this program to practice and refine their skills
- The SIG members practice scoring at the monthly Club Competition meetings
- Then meet the following Friday on Zoom to review the competition images and their scoring process



Expanded Vision



Water Droplets



Intentional Camera Movement



Forced Perspective

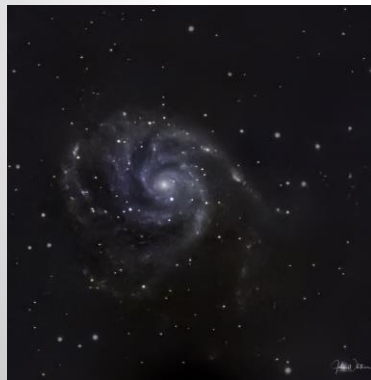


Dragging the Shutter

Expanded Vision

- Leader: John Whitmore (nevin1863@yahoo.com)
- Primary focus is learning non-traditional photography techniques
 - Such as HDR, double exposure, focus stacking, ICM, etc.
- Members share shooting techniques and processing process
- Membership is open to others to apply
- SIG Facebook page provides an opportunity to share images and get feedback
<https://www.facebook.com/groups/549449785593430>

NIGHT SKY



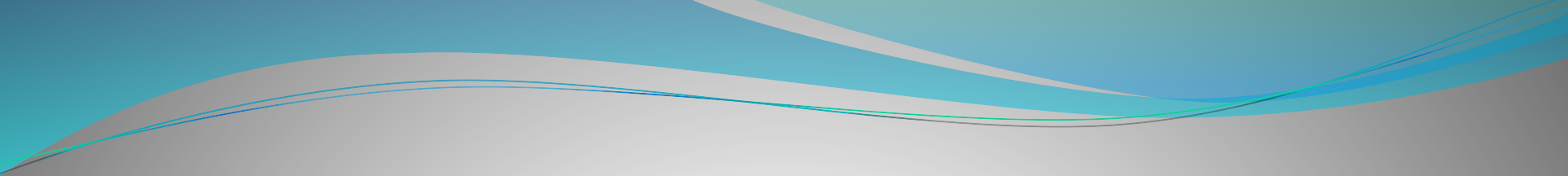
Night Sky

- Leaders: John Whitmore (nevin1863@yahoo.com) and Doug Miller (dmiller4277@gmail.com)
- Primary focus is learning and sharing images of the night sky
 - Milky Way
 - Moonrise
 - Celestial events such as comets and eclipses
 - Deep Space Imaging
- Size is unlimited but outings may be limited to 10 participants
- Outings occur based on celestial events and weather
- Educational meetings held online
- SIG Facebook page provides an opportunity to share images and get feedback :

<https://www.facebook.com/groups/822322364607578>

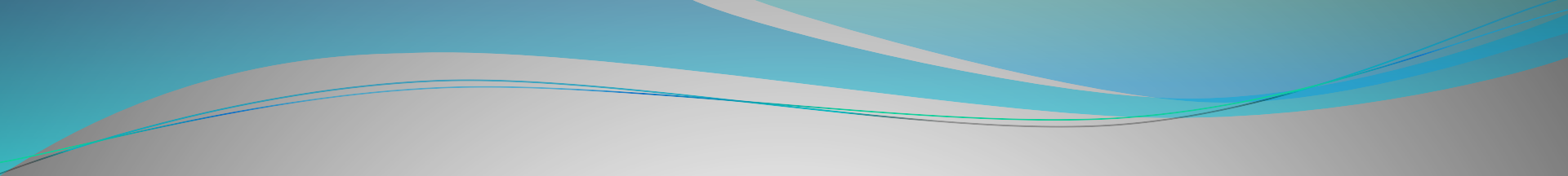
Summary

- SIGs focus on specific genre of photography
- Chance to meet others with similar interest
- Contact the SIG leaders for more information



CCC Website

- Link to the website:
 - www.coastalcameraclub.com
- List of upcoming speakers
- Calendar of events
- Winning images
- SIG pages
- Links to club documents
- Video recordings of past presentations



Print Studio

Presented by

Paul Hammesfahr



Print Studio

- CCC & RAL Active Members have access to have their images printed at the Print Studio at RAL.
- All Images are Printed by Trained CCC Monitors.

Current Monitors:

Ken Arni, Don Barrow, Scott Becque, Paul Hammesfahr, John Hoyt, George Hudson, Susan McFarlin, Doug Miller, & Dick Snyder.

- CCC website describes how to prepare your images for printing (**Home page; Access Print Studio [HERE](#)**).



Print Studio

- All Printing Requests are by Appointment ONLY!
 - Request via: printstudio@coastalcameraclub.com
 - Please request printing times at least 24 hour in advance!
 - Appointments are from 10 am to 1 pm; ~1/2 to 3/4 hr. each
 - September through May: Tuesdays & Saturdays
 - June through August: Tuesdays ONLY
- Choice of Epson Archival Photographic paper sizes:
 - Letter (8.5 x 11") glossy, semi-gloss, & matte
 - A3 (11.7 x 16.5") glossy
 - A3+ (13 x 19") glossy & matte
 - Maximum size (17 x 22") glossy, semi-gloss, & matte
- Epson SureColor P800 Printer (9-color UltraChrome HD inks)



Print Studio

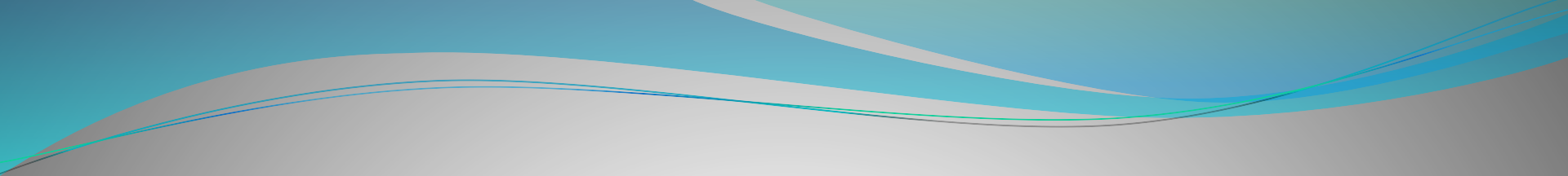
Would you like to become a “Trained Print Monitor”??

- **Qualifications**—Active Member of CCC with basic knowledge of how to print from Lightroom.
- **Training:** —Observation and training with a current Print Monitor—1, 2, or as many days as you prefer.
- **Printing**—One day per month for Active Members of CCC and/or RAL. (Both PC and/or MAC computer/monitor are available.)
- **Free Benefits!!**—Producing quality prints at a very, reasonable price for all Members!
- Apply via **printstudio@coastalcameraclub.com**

“You don’t take a photograph, you make it”

Ansel Adams





Virtual Beach Bash

PSA Interclub Competitions

Education Raffle

Presented By

Doug Strande for Joanne Tramposch



Virtual Beach Bash

- Two day event - two hour presentation each day
- Speakers yet to be determined
- 2025 Event will be held either Feb 22 & 23 or March 1 & 2



PSA Interclub Competitions

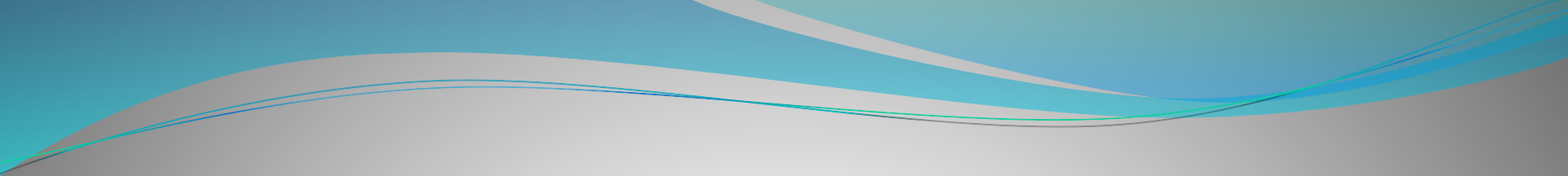
- Competitions are held three (3) times each competition year, beginning in the fall
- The CCC will compete in all three competitions with six entries each in Color, Monochrome, Photojournalism, Travel & Nature
- The PSA deadline for competitions are November 15, February 15, and April 15. The CCC will open the competition 45 days prior with a cutoff date 15 days prior to the PSA deadline
- Any club that is a PSA member may choose to compete as a club, with awards going to individuals
- Awards also go to the top three clubs with the highest accumulated points for the year



Education Raffle

- The lucky winning member of up to \$500 raffle is
- 1st lucky winning member of up to \$250 raffle is
- 2nd lucky winning member of up to \$250 raffle is





Coastal Camera Club Logos on Apparel



- Community Awareness
- Camera Club has paid for logo digitization
- Large Catalog of Apparel
- Will embroider your own items (approximately \$8.00)
- Reasonable Prices



Questions and Comments